

EMERGENCY ORDINANCE NO. 2017-27

AN ORDINANCE APPROVING THE FINAL PLAT OF MONROE CROSSINGS, PHASE THREE, BLOCK E, SECTION 4, AND DECLARING AN EMERGENCY.

WHEREAS, Monroe Crossings, Inc. has submitted a final plat for construction of Monroe Crossings, Phase Three, Block E, Section 4.

WHEREAS, all submissions and actions necessary under the Subdivision Regulations have been completed and approval was given by the Monroe Planning Commission on August 15, 2017.

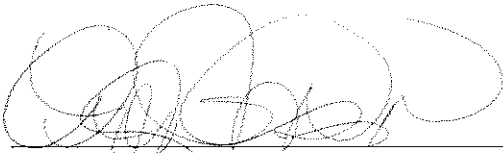
NOW, THEREFORE, BE IT ORDAINED BY THE COUNCIL OF THE CITY OF MONROE, STATE OF OHIO, THAT:

SECTION 1: The Council of the City of Monroe hereby approves the final plat of Phase Three, Block E, Section 4 submitted by Monroe Crossings, Inc., upon receipt of proper bonding and payment of all applicable review and inspection fees.

SECTION 2: This measure is hereby declared to be an emergency measure necessary for the immediate preservation of the public peace, health, safety and welfare and further for the reason that Council desires to approve the Final Plat at the earliest possible date to allow for lot sales to occur. Therefore, this measure shall take effect and be in full force from and after its passage.


PASSED: November 14, 2017

ATTEST:



Clerk of Council


APPROVED:



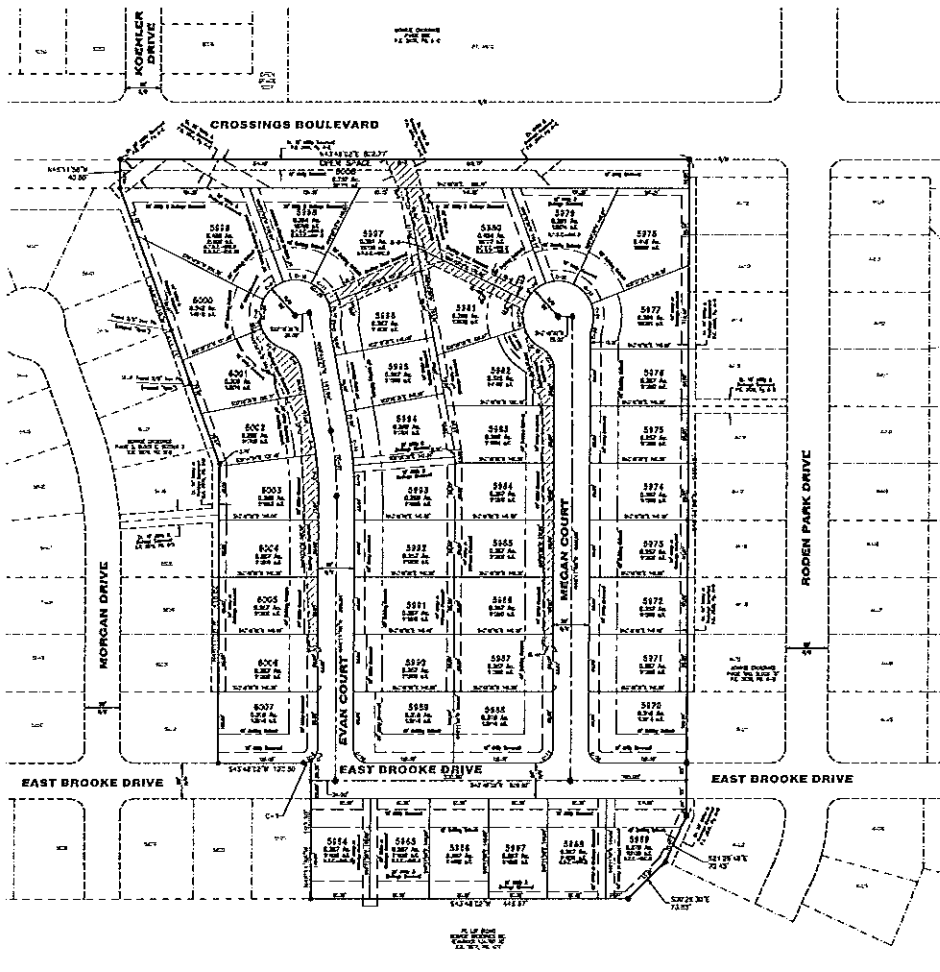
Mayor

This legislation was enacted in an open meeting pursuant to the terms and provisions of the Municipal Law, Section 121.22 of the Ohio Revised Code.

"I, the undersigned Clerk of Council of the city of Monroe, Ohio, hereby certify the foregoing (ordinance or resolution) was published as required by Section 7.16 of the Charter of the City of Monroe.



Clerk of Council
City of Monroe, Ohio



CURVE TABLE

Curve	Delta	Radius	Length	Offset
C-1	332.51°	28.28'	11.82'	527.05' x 11.42'

CURVE TABLE

Curve	Delta	Radius	Length	Offset
C-1	332.51°	28.28'	11.82'	527.05' x 11.42'
C-2	332.51°	28.28'	11.82'	527.05' x 11.42'
C-3	332.51°	28.28'	11.82'	527.05' x 11.42'
C-4	332.51°	28.28'	11.82'	527.05' x 11.42'
C-5	332.51°	28.28'	11.82'	527.05' x 11.42'
C-6	332.51°	28.28'	11.82'	527.05' x 11.42'
C-7	332.51°	28.28'	11.82'	527.05' x 11.42'
C-8	332.51°	28.28'	11.82'	527.05' x 11.42'
C-9	332.51°	28.28'	11.82'	527.05' x 11.42'
C-10	332.51°	28.28'	11.82'	527.05' x 11.42'
C-11	332.51°	28.28'	11.82'	527.05' x 11.42'
C-12	332.51°	28.28'	11.82'	527.05' x 11.42'
C-13	332.51°	28.28'	11.82'	527.05' x 11.42'
C-14	332.51°	28.28'	11.82'	527.05' x 11.42'
C-15	332.51°	28.28'	11.82'	527.05' x 11.42'
C-16	332.51°	28.28'	11.82'	527.05' x 11.42'
C-17	332.51°	28.28'	11.82'	527.05' x 11.42'
C-18	332.51°	28.28'	11.82'	527.05' x 11.42'
C-19	332.51°	28.28'	11.82'	527.05' x 11.42'
C-20	332.51°	28.28'	11.82'	527.05' x 11.42'
C-21	332.51°	28.28'	11.82'	527.05' x 11.42'
C-22	332.51°	28.28'	11.82'	527.05' x 11.42'
C-23	332.51°	28.28'	11.82'	527.05' x 11.42'
C-24	332.51°	28.28'	11.82'	527.05' x 11.42'
C-25	332.51°	28.28'	11.82'	527.05' x 11.42'
C-26	332.51°	28.28'	11.82'	527.05' x 11.42'
C-27	332.51°	28.28'	11.82'	527.05' x 11.42'
C-28	332.51°	28.28'	11.82'	527.05' x 11.42'
C-29	332.51°	28.28'	11.82'	527.05' x 11.42'
C-30	332.51°	28.28'	11.82'	527.05' x 11.42'
C-31	332.51°	28.28'	11.82'	527.05' x 11.42'
C-32	332.51°	28.28'	11.82'	527.05' x 11.42'
C-33	332.51°	28.28'	11.82'	527.05' x 11.42'
C-34	332.51°	28.28'	11.82'	527.05' x 11.42'
C-35	332.51°	28.28'	11.82'	527.05' x 11.42'
C-36	332.51°	28.28'	11.82'	527.05' x 11.42'
C-37	332.51°	28.28'	11.82'	527.05' x 11.42'
C-38	332.51°	28.28'	11.82'	527.05' x 11.42'
C-39	332.51°	28.28'	11.82'	527.05' x 11.42'
C-40	332.51°	28.28'	11.82'	527.05' x 11.42'
C-41	332.51°	28.28'	11.82'	527.05' x 11.42'
C-42	332.51°	28.28'	11.82'	527.05' x 11.42'
C-43	332.51°	28.28'	11.82'	527.05' x 11.42'
C-44	332.51°	28.28'	11.82'	527.05' x 11.42'
C-45	332.51°	28.28'	11.82'	527.05' x 11.42'
C-46	332.51°	28.28'	11.82'	527.05' x 11.42'
C-47	332.51°	28.28'	11.82'	527.05' x 11.42'
C-48	332.51°	28.28'	11.82'	527.05' x 11.42'
C-49	332.51°	28.28'	11.82'	527.05' x 11.42'
C-50	332.51°	28.28'	11.82'	527.05' x 11.42'

LEGEND

① Centerline Curve
 ② Offset Curve
 ③ Tangent Line
 ④ Right of Way
 ⑤ Easement
 ⑥ Utility
 ⑦ Other as Shown

CENTERLINE CURVE TABLE

Curve	Delta	Radius	Length	Offset
C-1	332.51°	28.28'	11.82'	527.05' x 11.42'

SANITARY EASEMENT LINE TABLE

Line	Delta	Radius	Length	Offset
S-1	332.51°	28.28'	11.82'	527.05' x 11.42'
S-2	332.51°	28.28'	11.82'	527.05' x 11.42'
S-3	332.51°	28.28'	11.82'	527.05' x 11.42'
S-4	332.51°	28.28'	11.82'	527.05' x 11.42'
S-5	332.51°	28.28'	11.82'	527.05' x 11.42'
S-6	332.51°	28.28'	11.82'	527.05' x 11.42'
S-7	332.51°	28.28'	11.82'	527.05' x 11.42'
S-8	332.51°	28.28'	11.82'	527.05' x 11.42'
S-9	332.51°	28.28'	11.82'	527.05' x 11.42'
S-10	332.51°	28.28'	11.82'	527.05' x 11.42'
S-11	332.51°	28.28'	11.82'	527.05' x 11.42'
S-12	332.51°	28.28'	11.82'	527.05' x 11.42'
S-13	332.51°	28.28'	11.82'	527.05' x 11.42'
S-14	332.51°	28.28'	11.82'	527.05' x 11.42'
S-15	332.51°	28.28'	11.82'	527.05' x 11.42'
S-16	332.51°	28.28'	11.82'	527.05' x 11.42'
S-17	332.51°	28.28'	11.82'	527.05' x 11.42'
S-18	332.51°	28.28'	11.82'	527.05' x 11.42'
S-19	332.51°	28.28'	11.82'	527.05' x 11.42'
S-20	332.51°	28.28'	11.82'	527.05' x 11.42'
S-21	332.51°	28.28'	11.82'	527.05' x 11.42'
S-22	332.51°	28.28'	11.82'	527.05' x 11.42'
S-23	332.51°	28.28'	11.82'	527.05' x 11.42'
S-24	332.51°	28.28'	11.82'	527.05' x 11.42'
S-25	332.51°	28.28'	11.82'	527.05' x 11.42'
S-26	332.51°	28.28'	11.82'	527.05' x 11.42'
S-27	332.51°	28.28'	11.82'	527.05' x 11.42'
S-28	332.51°	28.28'	11.82'	527.05' x 11.42'
S-29	332.51°	28.28'	11.82'	527.05' x 11.42'
S-30	332.51°	28.28'	11.82'	527.05' x 11.42'
S-31	332.51°	28.28'	11.82'	527.05' x 11.42'
S-32	332.51°	28.28'	11.82'	527.05' x 11.42'
S-33	332.51°	28.28'	11.82'	527.05' x 11.42'
S-34	332.51°	28.28'	11.82'	527.05' x 11.42'
S-35	332.51°	28.28'	11.82'	527.05' x 11.42'
S-36	332.51°	28.28'	11.82'	527.05' x 11.42'
S-37	332.51°	28.28'	11.82'	527.05' x 11.42'
S-38	332.51°	28.28'	11.82'	527.05' x 11.42'
S-39	332.51°	28.28'	11.82'	527.05' x 11.42'
S-40	332.51°	28.28'	11.82'	527.05' x 11.42'
S-41	332.51°	28.28'	11.82'	527.05' x 11.42'
S-42	332.51°	28.28'	11.82'	527.05' x 11.42'
S-43	332.51°	28.28'	11.82'	527.05' x 11.42'
S-44	332.51°	28.28'	11.82'	527.05' x 11.42'
S-45	332.51°	28.28'	11.82'	527.05' x 11.42'
S-46	332.51°	28.28'	11.82'	527.05' x 11.42'
S-47	332.51°	28.28'	11.82'	527.05' x 11.42'
S-48	332.51°	28.28'	11.82'	527.05' x 11.42'
S-49	332.51°	28.28'	11.82'	527.05' x 11.42'
S-50	332.51°	28.28'	11.82'	527.05' x 11.42'

EASEMENT CURVE TABLE

Curve	Delta	Radius	Length	Offset
E-1	332.51°	28.28'	11.82'	527.05' x 11.42'
E-2	332.51°	28.28'	11.82'	527.05' x 11.42'
E-3	332.51°	28.28'	11.82'	527.05' x 11.42'
E-4	332.51°	28.28'	11.82'	527.05' x 11.42'
E-5	332.51°	28.28'	11.82'	527.05' x 11.42'

NOTES:

1. BASED ON SURVEY PLAT AND RECORDS OF THE PUBLIC.
2. REFER TO VOLUME 22 PAGE 21.
3. REFER TO VOLUME 22 PAGE 22.
4. REFER TO VOLUME 22 PAGE 23.
5. REFER TO VOLUME 22 PAGE 24.
6. REFER TO VOLUME 22 PAGE 25.
7. REFER TO VOLUME 22 PAGE 26.
8. REFER TO VOLUME 22 PAGE 27.
9. REFER TO VOLUME 22 PAGE 28.
10. REFER TO VOLUME 22 PAGE 29.
11. REFER TO VOLUME 22 PAGE 30.
12. REFER TO VOLUME 22 PAGE 31.
13. REFER TO VOLUME 22 PAGE 32.
14. REFER TO VOLUME 22 PAGE 33.
15. REFER TO VOLUME 22 PAGE 34.
16. REFER TO VOLUME 22 PAGE 35.
17. REFER TO VOLUME 22 PAGE 36.
18. REFER TO VOLUME 22 PAGE 37.
19. REFER TO VOLUME 22 PAGE 38.
20. REFER TO VOLUME 22 PAGE 39.
21. REFER TO VOLUME 22 PAGE 40.
22. REFER TO VOLUME 22 PAGE 41.
23. REFER TO VOLUME 22 PAGE 42.
24. REFER TO VOLUME 22 PAGE 43.
25. REFER TO VOLUME 22 PAGE 44.
26. REFER TO VOLUME 22 PAGE 45.
27. REFER TO VOLUME 22 PAGE 46.
28. REFER TO VOLUME 22 PAGE 47.
29. REFER TO VOLUME 22 PAGE 48.
30. REFER TO VOLUME 22 PAGE 49.
31. REFER TO VOLUME 22 PAGE 50.
32. REFER TO VOLUME 22 PAGE 51.
33. REFER TO VOLUME 22 PAGE 52.
34. REFER TO VOLUME 22 PAGE 53.
35. REFER TO VOLUME 22 PAGE 54.
36. REFER TO VOLUME 22 PAGE 55.
37. REFER TO VOLUME 22 PAGE 56.
38. REFER TO VOLUME 22 PAGE 57.
39. REFER TO VOLUME 22 PAGE 58.
40. REFER TO VOLUME 22 PAGE 59.
41. REFER TO VOLUME 22 PAGE 60.
42. REFER TO VOLUME 22 PAGE 61.
43. REFER TO VOLUME 22 PAGE 62.
44. REFER TO VOLUME 22 PAGE 63.
45. REFER TO VOLUME 22 PAGE 64.
46. REFER TO VOLUME 22 PAGE 65.
47. REFER TO VOLUME 22 PAGE 66.
48. REFER TO VOLUME 22 PAGE 67.
49. REFER TO VOLUME 22 PAGE 68.
50. REFER TO VOLUME 22 PAGE 69.
51. REFER TO VOLUME 22 PAGE 70.
52. REFER TO VOLUME 22 PAGE 71.
53. REFER TO VOLUME 22 PAGE 72.
54. REFER TO VOLUME 22 PAGE 73.
55. REFER TO VOLUME 22 PAGE 74.
56. REFER TO VOLUME 22 PAGE 75.
57. REFER TO VOLUME 22 PAGE 76.
58. REFER TO VOLUME 22 PAGE 77.
59. REFER TO VOLUME 22 PAGE 78.
60. REFER TO VOLUME 22 PAGE 79.
61. REFER TO VOLUME 22 PAGE 80.
62. REFER TO VOLUME 22 PAGE 81.
63. REFER TO VOLUME 22 PAGE 82.
64. REFER TO VOLUME 22 PAGE 83.
65. REFER TO VOLUME 22 PAGE 84.
66. REFER TO VOLUME 22 PAGE 85.
67. REFER TO VOLUME 22 PAGE 86.
68. REFER TO VOLUME 22 PAGE 87.
69. REFER TO VOLUME 22 PAGE 88.
70. REFER TO VOLUME 22 PAGE 89.
71. REFER TO VOLUME 22 PAGE 90.
72. REFER TO VOLUME 22 PAGE 91.
73. REFER TO VOLUME 22 PAGE 92.
74. REFER TO VOLUME 22 PAGE 93.
75. REFER TO VOLUME 22 PAGE 94.
76. REFER TO VOLUME 22 PAGE 95.
77. REFER TO VOLUME 22 PAGE 96.
78. REFER TO VOLUME 22 PAGE 97.
79. REFER TO VOLUME 22 PAGE 98.
80. REFER TO VOLUME 22 PAGE 99.
81. REFER TO VOLUME 22 PAGE 100.

SURVEYOR'S CERTIFICATION

I, **DAVID L. BAKER**,
 a duly Licensed Professional Surveyor,
 do hereby certify that the above is a true and
 correct copy of the original plat as shown to
 me by **DAVID L. BAKER**,
 and that the same is a true and correct copy
 of the original plat as shown to me by
DAVID L. BAKER.
 This certification is made this **22nd** day
 of **August**, **2012**.
 My office is located at **11111**
11111, **11111**, **11111**.
DAVID L. BAKER
 Professional Surveyor
 A-6752030-00

**MONROE CROSSINGS
 PHASE 1
 BLOCK TEN SECTION FOUR**
 CITY OF MONROE, WASHINGTON COUNTY, OHIO

**baayer
 becker**
 Surveyors & Engineers
 11111
 11111
 11111

2/2